



**collection 2026**





We are all "ohana"

Ohana means family in Hawaiian. The fun, the adventures and the sense of freedom that comes with having a good time in and around water, is what makes us all one big water-loving family. Let's cherish these moments and create a positive ripple effect for future generations.

### **WE ARE CONNECTED.**

We've got your back

Whether you are going on another wild water adventure or just relaxing by the waterside, at Waimea we got your back. We guarantee our products meet all the quality and safety standards, so that you and your family can have a great, carefree time in and around the water.

### **WE ARE CAREFREE.**

We are curious

Going on adventures, both big and small, ignites a spark of curiosity within us all. Water, in all its forms, gives us the opportunity to have fun, make new friends, to overcome obstacles and to learn new skills. Let us tickle your imagination and help you escape everyday life.

### **WE ARE CURIOUS.**

We always add "a splash of fun"

We believe that a day without a smile, is a lost day. From the carefully selected product and colourful prints in our collection to our customer service and the way we communicate, at Waimea we create "a splash of fun" with everything we do.

### **WE ARE FUN.**

# **A SPLASH OF FUN**







## NEW LOGO!

In line with the positioning of the brand, a more recognizable and **family friendly** look and feel  
Updated with a **splash of ... fun** of course

## NEW PACKAGING!

**More Sustainable** -> Replacement of single use plastics

**New Fun Design** -> Updated, uniform look and feel

**For Everyone** -> We communicate in 23 languages



### wet splash

water play  
aqua shoes  
wave gear  
swim training / safety



### beach splash

relaxing gear  
active beach games

## FUN IN THE SUN!

Everyone should be able to enjoy carefree, good times in and around the water. For most families, a day at Waimea beach in Hawaii is just a dream. The clear blue water, the palm trees... But what if we could have that "Hawaiian vibe" everywhere? With our colourful swim gear, beachwear, and water toys, you are always ready to go out on a new splashing adventure.

At Waimea, we are true believers that, whether it is at the beach, in a lake or pool, or even in a backyard puddle, water is where fun, freedom, and adventures begin. Waimea adds a splash of fun to your moments with family and friends.







## WET SPLASH

### EVERYTHING IN AND ON THE WATER

Jump in and make waves! Water Splash is all about movement, refreshment, and unforgettable moments. With vibrant swim gear and inflatable toys, every water experience, whether it's at the pool, lake, or in the backyard, becomes a splashing adventure. Your family can enjoy the water safely and confidently. Dive into fun and make every splash a memory.



## SWIMMING GOGGLES

JR



### 88ED • Akamu •

- polycarbonate lens with silicone goggles and headband
- anti-fog feature prevents the goggles from fogging up
- UV protection
- easy adjustable nose bridge and strap

Colours: Aqua/Orange (AQO),  
Yellow/Aqua (GEA)

JR



### 88EE Cartoon • Moko •

- cheerful swimming goggles with cartoons
- polycarbonate lens with PVC frame
- adjustable silicone headband
- adjustable nose bridge
- anti-fog, prevents the goggles from fogging up
- UV protection

Colours: Aqua/Ocher yellow (AOB),  
Light Pink/Light blue (LRL)



# SWIMMING GOGGLES

JR



## 88DA • Lana •

- polycarbonate lens
- silicone frame and strap
- anti fog lens, prevents fogging of the glasses
- UV protection
- easy adjustable nose bridge and strap

JR



## 88DB • Kaleo •

- polycarbonate lens
- silicone frame and strap
- anti fog lens, prevents fogging of the glasses
- UV protection
- easy adjustable nose bridge and strap



JR



## 88EB Two-tone • Keoni •

- polycarbonate lens
- silicone frame and strap
- anti fog lens, prevents fogging of the glasses
- UV protection
- easy adjustable strap

Colours: Aqua/White (BLW),  
Fuchsia/Pink (FUR),  
Yellow/Orange (GEO)

SR



## 88DC • Koi •

- polycarbonate lens
- silicone frame and strap
- anti fog lens, prevents fogging of the glasses
- UV protection
- easy adjustable nose bridge and strap

Colours: Navy blue (MAR),  
Black (ZWA)



# SWIMMING GOGGLES

JR



**88EK • Anaru •**  
**Curved Multi-Colour**

- curved diving mask for children
- polycarbonate lens with silicone skirt
- easily adjustable head strap
- quick-release buckle at the back with push button
- anti-fog coating
- UV protection

Colours: Blue/Yellow (BGZ),  
Pink/Yellow (RGA)

JR



**88EH • Kekoa •**  
**with Neoprene Headband**

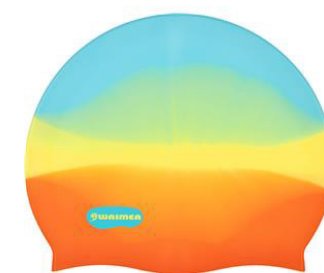
- polycarbonate lens
- silicone mask
- easy adjustable neoprene headband
- anti-fog, prevents fogging of the goggles
- UV protection

Colours: Aqua/Navy blue (AMG),  
Orange/Aqua (OAB),  
Pink/Fuchsia (RFG)



# SWIMMING ACCESSORIES

JR



**88WB Swimcap • Lilo •**

- comfortable swimming cap
- lightweight, strong material
- anatomically shaped

Colours: Fuchsia/Yellow (FGR),  
Orange/Yellow (OGA)

SR



**88WA Swimcap • Luana •**

- comfortable swimming cap
- lightweight, strong material
- anatomically shaped

Colours: Navy blue/Blue (MBL)



**52ZQ Kick Board • Keanu •**

- equipped with 2 handles for a good grip
- ideal for improving swimming strokes
- lightweight, durable 100% PE foam
- dimensions 41,5 x 28,5 x 2,7 cm

Colours: Aqua/Yellow (AQG),  
Orange/Yellow (ORG)

# SWIMMING FINs

JR



## 88DO Swimming Fins

- open foot piece for comfortable fit
- two-sided adjustable heel strap with quick closure and convenient pull loops
- effective water drainage due to the open-foot design

Colours: Cobalt blue/Black (KOZ)

Sizes: 27-31, 32-36

SR



## 88DP Swimming Fins

- open foot piece for comfortable fit
- two-sided adjustable heel strap with quick closure and convenient pull loops
- effective water drainage due to the open-foot design

Colours: Dark blue/Black (DBB), Cobalt blue/Black (KOZ)

Sizes: 37-41, 42-47

SR



## 88DX Short Swimming Fins

• Anakoni •

- swim fins with adjustable foot size for maximum comfort
- two-sided adjustable heel strap with quick closure and convenient pull loops
- foot made of sturdy TPR material with a non-slip profile
- effective water drainage due to the open-foot design

Colours: Navy blue/Aqua (MAA)

Sizes: 39-43, 44-48

# DIVING MASK

JR



## 88EF • Akoni •

- polycarbonate lens
- PVC goggles and headband
- anti-fog, prevents fogging of the goggles
- UV protection
- easily adjustable headband with quick fasteners on 2 sides

Colours: Aqua/Transparent (AQU), Fuchsia/Transparent (FUC), Yellow/Transparent (GEE)

JR



## 88EI • Nikiro •

with Textile Headband

- polycarbonate lens
- PVC mask
- easily adjustable textile head strap
- anti-fog, prevents fogging of the goggles
- UV protection

Colours: Dark blue/Light blue (DBL), Pink/Light green (RLG)



## 52VJ Dive Animals

- neoprene diving shape with sand filling
- set of 3 different shapes:
- (GBR) turtle + submarine + fish
- (RGO) starfish + pufferfish + crab

Colours: Green/Blue (GBR), Red/Yellow (RGO)

# A SPLASH OF FUN!



# DIVING SETS

JR



**88DH • Nailani •**  
**Diving Mask with Snorkel**

- tempered glass lens
- polycarbonate frame
- PVC mask and adjustable strap
- PVC air tube and mouthpiece
- draining valve
- safety outlet at top of the tube

Colours: Yellow/Orange (FGE),  
Aqua/Orange (KOB),  
Pink/Yellow (ROZ)

JR



**88DF • Maleko •**  
**Diving Mask with Snorkel**

- tempered glass lens
- polycarbonate frame
- PVC mask and adjustable strap
- PVC mouthpiece and air tube,
- Tube with flexible harmonica
- draining valve
- safety outlet at top of the tube

Colours: Fuchsia/Black (FUZ),  
Yellow/Cobalt blue (GEK),  
Navy blue/Silver grey (MAZ)



JR



**88EG Diving Set • Mililani •**

- polycarbonate lens
- PVC mask
- PVC swim fins
- PVC snorkel
- snorkel equipped with a water drainage valve and safety air exhaust

Colours: Blue/Yellow (BAG),  
Pink/Fuchsia (ROF)

Sizes: 31-34, 35-38





# DIVING SETS

SR



**88DI • Kailani •**  
**Diving Mask with Snorkel**

- tempered glass lens
- polycarbonate frame
- PVC mask and adjustable strap
- PVC air tube and mouthpiece
- draining valve
- safety outlet at top of the tube

Colours: Cobalt blue (KOB)

SR



**88DJ • Silicone •**  
**Diving Mask with Snorkel**

- tempered glass lens
- polycarbonate frame
- silicone mask and adjustable strap
- PVC air tube and silicone mouthpiece
- draining valve
- tube with pivot dry-top

Colours: Black/Cobalt blue (ZWK)

SR



**88DN Snorkel • Full Dry •**  
**Liquid Silicone**

- liquid mouthpiece
- PVC air tube
- draining valve
- tube with dry top deflector

Colours: Yellow/Orange (FGK)

SR



**88EJ Full Face Diving Mask • Kaipo •**

- full-face diving mask with foldable snorkel
- mirrored polycarbonate lens with UV protection
- CE approved in accordance with EN16805:2015 + EN1972:2015
- frame: ABS and silicone head strap
- mask: food-grade liquid silicone
- equipped with dry-top safety air valve
- anti-fog coating, prevents lens fogging
- advanced air circulation system for safe CO2 expulsion and reduced condensation

Colours: Aqua/Light blue (ALZ),  
Navy blue/Black (MAZ)

Sizes: S/M, L/XL





# WATER SHOES



## 13AT • Wave Rider •

- comfortable neoprene water shoes
- TPR outer sole with anti-skid
- top of neoprene and mesh
- cord with stopper at the heel

Colours: Navy blue/Cobalt blue (MAK),  
Black (ZWA),  
Black/Pink (ZWR)

Sizes: 22 till 48



## 13CA • Sea Whip •

- TPR outer sole with anti-skid
- top of neoprene and mesh
- decorative velcro tape
- pulling strap at the heel

Colours: Blue/Black (BLA),  
Pink/Black (ROZ)

Sizes: 28 till 46

SR



## 13CG • Chase •

- TPR outer sole with anti-skid
- top of neoprene and mesh
- cord with stopper

Colour: Blue/White (BLW)

Sizes: 37 till 46

SR



## 13CH • Skip •

- TPR outer sole with anti-skid
- top of neoprene and mesh
- cord with stopper

Colours: Blue/Grey (BLG)  
Yellow/Grey (GEG)  
Coral/Black (KOZ)

Sizes: 37 till 46



# WATER SHOES

JR



## 13BQ • Wave •

- TPR outer sole with anti-skid
- top of neoprene and mesh
- drawstring with toggle closure at the back

Colour: Black/Yellow (ZWG)

Sizes: 28 till 36

JR



## 13BS • Skye •

- TPR outer sole with anti-skid
- top of neoprene and mesh
- drawstring with toggle closure at the back

Colour: Black/Green (ZGR)

Sizes: 28 till 35

JR



## 13CL • Ngaio •

- TPR sole with non-slip grip
- upper made of neoprene and mesh
- drawstring with toggle closure at the front

Colours: Blue (BLA),  
Green/Orange (GRO),  
Pink/Coral (ROK)

Sizes: 26 till 36

JR



## 13BW • Jace •

- solid TPR outer sole with anti-skid
- top of neoprene and mesh
- cord with stopper at the heel

Colour: Grey/Orange (GRO)

Sizes: 22 till 30

JR



## 13CZ Water Shoe • Kaia •

- strong, flexible PVC (UV resistant)
- adjustable buckle for a perfect fit
- non-slip sole

Colours: Light green (LBL),  
Light Pink (LRO),  
Navy blue (MAR)

Sizes: 28 till 33





# WATER FLOW

SR



## 13BY • Blacktip •

- Permeable TPR outer sole with anti-skid
- lycra top, quick drying
- almost seamless design
- removable innersole with honeycomb construction
- pulling strap at the heel

Colours: Black (ZWA)

Sizes: 35 till 45

SR



## 13CI • Grip Flow •

- Comfortable premium aqua shoe made of quick-dry material
- Permeable TPR outer sole with anti-skid
- Removable perforated EVA foam innersole
- Elastic cord with stopper on front side

Colours: Black (ZWA)

Sizes: 35 till 45

## Water Shoes Anti Slip

- comfortable, cheerful water shoes made of double mesh
- excellent grip with anti-slip sole
- TPR sole with water-permeable points
- removable EVA foam insole with left/right indication
- pull strap at the back

Sizes: 21/22, 23/24, 25/26, 27/28, 29/30, 31/32

JR



## 13CJ Print • Momi •

Colours: Blue (BLA),  
Sand/Coral (ZKG)

JR



## 13CK Plain • Mano •

Colours: Light blue (LBL),  
Orange/Coral (ORK)





# ICE BATHING

SR



## 55YD Neoprene Winter Aqua Shoes

- lightweight neoprene water shoes for ice bathing or cold-water activities like winter swimming or SUP
- thickness 3 mm
- non-slip TPR sole
- strong zipper with inner overfly

Sizes: 36 till 45

SR



## 55YA Neoprene Socks

- pre-shaped neoprene sock
- waterproof seams
- silicone anti-slip pattern underside
- thickness 3 mm
- light weight

Sizes: 36/38, 39/41, 42/44, 45/47

SR



## 55YC Neoprene Beanie

- neoprene hat with rib texture
- thickness 3 mm
- elasticated cord at back side for tighter fit
- cord with clip to attach hat to a wetsuit

SR



## 55YB Neoprene Gloves

- pre-shaped neoprene glove
- waterproof seams
- silicone anti-slip pattern on the palm
- thickness 3 mm
- weight 42 gr

sizes: S - (L25.5 cm - W 9 cm)  
M - (L26.5 cm - W 10 cm)  
L - (L27.5 cm - W 11 cm)





# INFLATABLES



**88BH Floating Hammock**  
• lokua •

- PVC floaters with polyester coated top layer
- comfortable polyester mesh hammock
- PVC valve
- dimensions: approx. 137 x 70 x 13 cm
- maximum body weight 80 kg
- not inflated

Colours :Light blue/Aqua (BLO),  
Pink/Ocher yellow (ROB)



**88BA Inflatable Bodyboard**  
• Makaio •

- PVC with polyester coated top layer
- 2 handles at the upper corners
- PVC valve
- dimensions: approx. 70 x 50 x 12 cm
- maximum body weight 30 kg
- not inflated

Colours: Light blue/Blue (BLO),  
Light Pink/Blue (ROB)



**88BB Bodyboard • Ikaia •**

- colorful bodyboard made of EPS (foam) covered with printed PE layer
- uni bottom
- cord with velcro wristband
- dimension approx. 93 x 48 x 5.2 cm

Colours : Dark blue/Aqua (BLG)  
Pink/Light blue (RBG)  
Sand/Blue (ZBG)

# BODY BOARDS



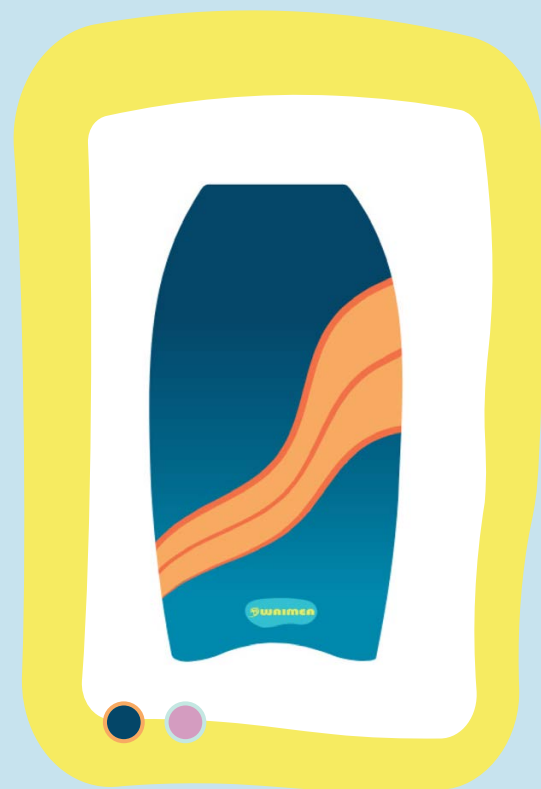
**88BC Bodyboard • Makani •**

- colorful bodyboard made of EPS (foam) covered with printed PE layer
- uni bottom
- two handles for extra grip.
- cord with velcro wristband
- dimension approx. 80 x 46 x 5.2 cm

Coulors: Blue/Aqua (BLG)  
Orange/Aqua (OBG)  
Pink/Green (RGG)



# BODY BOARDS



**88BD Slick Board • Maeva •**

- EPS (foam) covered with XPE top and smooth PP bottom
- printed top, uni bottom
- cord with velcro wristband
- dimension approx. 93 x 48 x 5.2 cm

Colours: Blue/Orange (BLO),  
Lilac/Blue (LIB)



**52WF • Boogie Air •  
Inflatable Bodyboard**

- PVC covered with durable nylon
- comfortable neoprene top
- cord with neoprene wristband and velcro
- mesh drain in cover
- length 42 inch/106 cm
- including polyester mesh carrying bag
- not inflated

A SPLASH  
OF FUN!

# BeACH FUN



**16SZ Play Ball • Alamea •**

- diameter approx. 21 cm (size 4)
- weight approx. 260 - 275 grams
- not inflated

Colours: Multi (MLT)



**Beach Ball PVC**

- not inflated

Colours: Aqua (AAW),  
Fluorescent pink (FAW),  
Fluorescent yellow (GAW),  
Fluorescent orange (OAW)

Sizes: **16TA:** diameter ca. 21 cm /  
weight ca. 260-275 gr.  
**16TB:** diameter ca. 13 cm /  
weight ca. 120-130 gr.





# SWIMMING VESTS



## 52ZD 3-in-1 Splash Guard • Kimo •

- 3-in-1 swimming vest (swimming bands + swimming belt)
- to be used as: complete swim vest, 2 separate swimming bands or separate swimming belt
- adjustable PP strap on the back with extra safe quick lock closure
- polyester with polyethylene filling
- CE approved in accordance with EN 13138-1:2021 + AC:2022
- no life-saving device

Colours: Orange/Blue (ORB),  
Pink (PNK)

Size: 2-6 Years / 15-30 kg



## 52ZY/ZZ Swimming Vest

- central zipper on front
- 8 compartments
- 3 detachable foam floaters per compartment in order to adjust buoyancy in accordance with child's swimming skills
- quick-lock and strap between the legs
- CE approved according to EN 13138-1:2021 AC:2022
- not a life saving device

Sizes: **52ZY:** 3-6 Years / 19-30 kg  
**52ZZ:** 2-3 Years / 15-19 kg



# SWIMMING VESTS



## 52ZB-01 Swimming Vest

- adjustable swimming vest by means of quick-lock safety buckles
- adjustable PP strap between the legs with quick-lock safety buckle
- polyester with polyethylene filling
- CE approved in accordance with EN 13138-1:2021 + AC:2022
- not a life saving device

Colours: Orange (ORA),  
Pink (PNK)

Size: 3-6 Years / 19-30 kg



## 52ZB/ZC Swimming Vest • Animal •

- adjustable swimming vest by means of quick-lock safety buckles
- adjustable PP strap between the legs with quick-lock safety buckle
- polyester with polyethylene filling
- CE approved in accordance with EN 13138-1:2021 + AC:2022
- not a life saving device

Colours: Yellow/Blue (GEE)  
Green/Yellow (GRO),  
Orange/Black (ORA),  
Red/Black (ROO),  
Pink/Orange (ROZ)

Sizes: **52ZB:** 3-6 Years / 19-30 kg  
**52ZC:** 2-3 Years / 15-19 kg



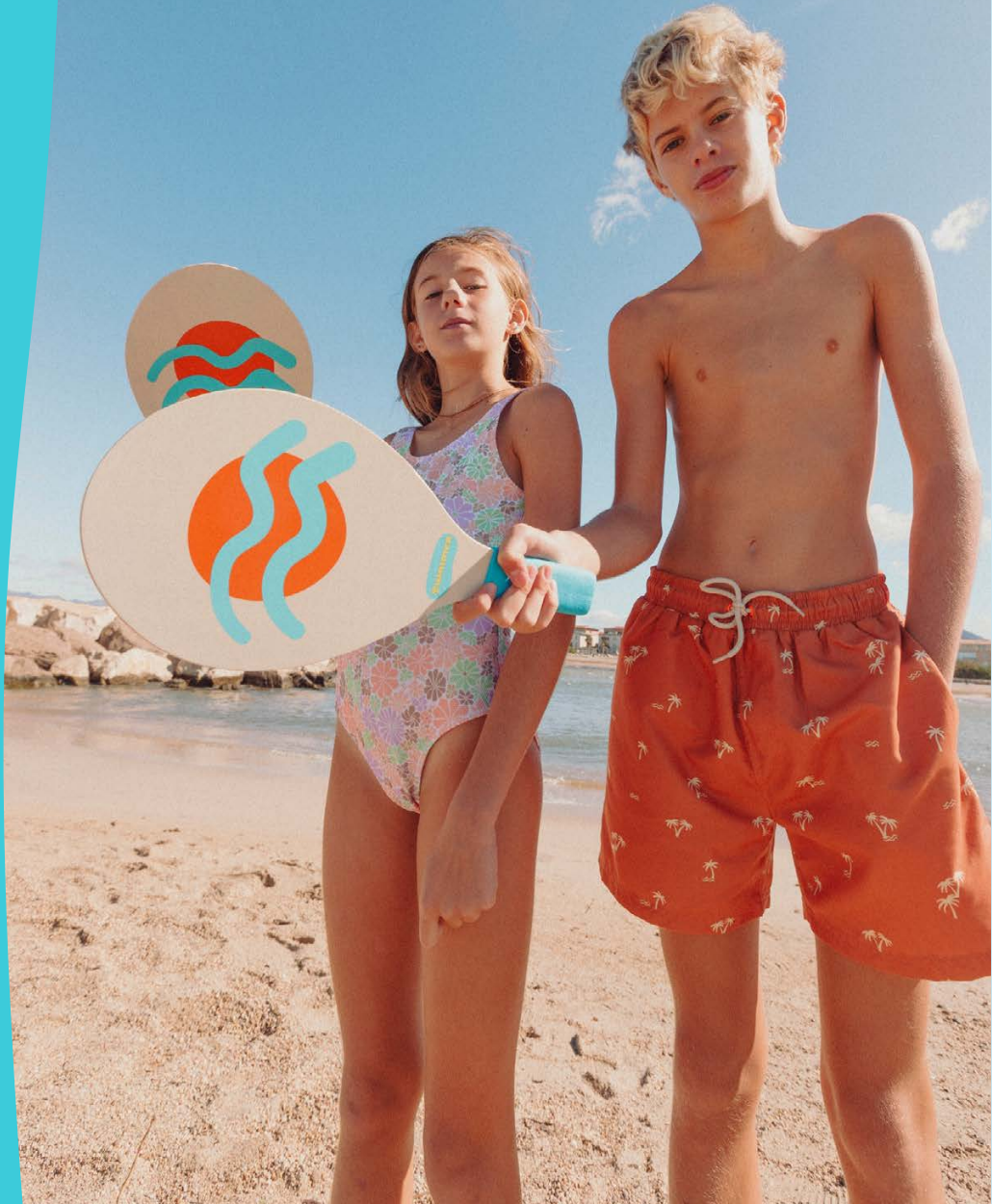




# BEACH SPLASH

## DISCOVER THE JOY OF THE SHORE - TOGETHER

Beach Splash is where the fun begins. We bring families closer with playful, colourful gear made for every kind of coastal adventure. Designed for curious kids and fun-loving parents, our products are safe, durable, and ready for action. Feel the sand, hear the laughter, and soak in the magic of a sunny day full of freedom and adventure. Wherever your beach is, the Waimea spirit is right there with you.



### 88MO Beach Umbrella • Oliana •

- aluminium tube with a wood-look coating
- tube diameter: 28/32 mm and a thickness of 0.7 mm
- integrated sand drill tip
- height-adjustable from 145–205 cm
- tiltable by means of a sturdy metal tilt mechanism
- 100% Polyester Oxford 210D cloth
- diameter of 175 cm and a span of 200 cm
- 8 panels with UPV-50 coating and a silver coating on the inside for extra heat reflection
- 8 sturdy, lightweight fibreglass ribs
- handy carrying bag

- Colours: Blue/Sand (BZH),  
Ocher yellow/Yellow (OGH)

# BEACH UMBRELLA'S



### 88MP Beach Umbrella • Pomara •

- Steel tube
- tube diameter: 22/25 mm and a thickness of 0.5 mm
- integrated sand drill tip
- height-adjustable from 125–185 cm
- 100% Polyester cloth
- diameter of 155 cm and a span of 180 cm
- 8 panels with UPV-50 coating
- 8 sturdy, lightweight fibreglass ribs
- handy carrying bag

Colour: Sand/Blue (ZBG)





# BEACH SHELTERS



## 21TR Beach Shelter • Arch •

- 190T polyester with UV50+ coating
- cork details
- durable FRP poles
- 4 sewn-in sandbags 20 x 15 cm
- 2 PP straps to keep the arch shape
- 8 stainless steel ground pegs, length 17 cm
- 4 guy ropes
- dimensions 220 x 115 x 105 cm
- polyester carrying bag

Colours: Yellow (GEB),  
Mint green (MIR),  
Pink (ROM)



## 21TS Beach Canopy

- 190T polyester with UV50+ coating
- cork details
- 2 x 3 aluminium poles with ground pins
- 8 stainless steel ground pegs, (17 cm)
- 6 guy ropes
- dimensions 300 x 175 x 180 cm
- polyester carrying bag

Colours: Blue (BLG),  
Yellow (GEB),  
Mint green (MIR),  
Pink (ROM)



## 21TT Beach Shelter • Bastion •

- polyester fabric with PU coating
- glass fibre poles
- waterproof PE groundsheet
- 8 stainless steel ground pegs, (18 cm)
- 4 nylon guy ropes
- 2 big storage bags on the inside
- dimensions 270 x 120 x 120 cm
- polyester carrying bag

Colours: Blue (BLA),  
Yellow (GEE),  
Peach (PER)



88MS • Tiaro •

88MT • Totoka •

## Beach Shelter Pop-Up Reflective

- pop-up beach tent with reflective fabric
- 100% polyester with water-repellent PU coating
- UPF50+ protection
- spring steel wire frame
- mesh window with an inner detachable fabric cover
- 6 stainless steel pegs, length 18 cm
- 3 adjustable nylon guy lines (minimum length 170 cm)
- 1 large storage pocket (20 x 25 cm) on the inside
- 2 sandbags at the rear for extra stabilization
- carrying bag with zipper

Colours: 88MS: Silver/Blue (ZBZ)  
88MT: Silver/Ocher yellow (ZOZ)

Dimensions: 88MS: approx. 168 x 168 x 130 cm  
88MT: approx. 130 x 130 x 100 cm





# FLIP FLOPS



**13EO • Mambo Beach •**

- PVC top
- EVA sole (13 mm)

Colours: Blue/Pink (BLR),  
Yellow/White (GEW),  
Pink/Yellow (ROG),  
Black/Pink (ZWR)

Sizes: 30 till 35



**13FE • Rider •**

- PVC top
- EVA sole (13 - 17 mm)

Colours: Grey/Aqua (GRA),  
Navy blue/Yellow (MAG),  
Pink/Light grey (ROG)

Sizes: 28 till 35



**13FI • Glow •**

- PVC top
- EVA sole (15 mm)

Colours: Bronze (BRO),  
Green (GRO)

Sizes: 36 till 41



**13FJ • Rope •**

- PVC top
- EVA sole (15 mm)

Colours: White (WIT),  
Black (ZWA)

Sizes: 36 till 41





# SUN HATS



**23CV UV Cap • Bora •**

- UV-resistant UPF 40+
- 6 panels
- long flap at the back of the neck for extra protection
- reversible – 1 side plain polyamide, 1 side with dot pattern polyester
- elastic in head circumference so that the hat does not shift

Colours: Blue (BLA),  
Navy blue (MAR),  
Pink (ROZ)

Size: approx. 52 cm



**23CX UV Cap • Bali •**

- UV-resistant UPF 40+
- 6 panels
- reversible – 1 side plain polyamide, 1 side with dot pattern polyester
- elastic in head circumference so that the hat does not shift

Colours: Blue (BLA),  
Navy blue (MAR),  
Pink (ROZ)

Size: approx. 52 cm



**23DE Straw Hat • Animal •**

- paper braided straw

Colours: Blanc (BLA),  
Pink (ROZ)

Size: approx. 50.5 cm



**55ZM Beach Short • Coco •**

- elasticated waistband with cord
- weight approx. 130 gr/m<sup>2</sup>

Colours: Azure (AZB),  
Fuchsia (FUC),  
Yellow (GEE),  
Light blue (LBL)

Sizes: 140, 152, 164



**55ZN Beach Short • Lotus •**

- elasticated waistband with cord
- weight approx. 130 gr/m<sup>2</sup>

Colours: Azure (AZB),  
Fuchsia (FUC),  
Yellow (GEE),  
Light blue (LBL)

Sizes: S till XL



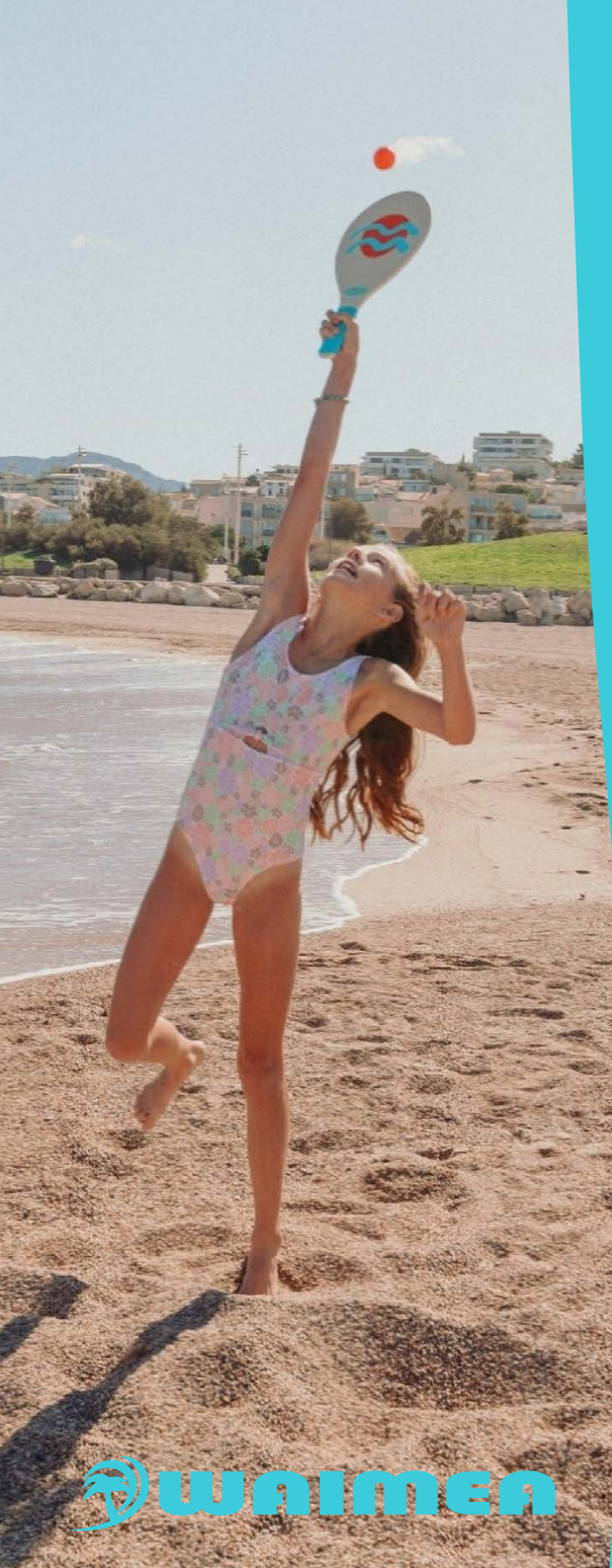
**55ZA Swimming Short**

- polyester mesh stitched-in short
- elasticated waistband with cord
- two slit pockets
- back pocket with velcro fastener

Colours: Yellow/Light blue (GEB),  
Pink/Yellow (ROG)

Sizes: S till XXL





### 63BG Beachball Set • Lokelani •

- 2 beach paddles, thickness 0.8 cm
- 2 TPR balls, diameter 38 mm
- foam grip, thickness approx. 8 mm
- dimensions of beach paddle 38 x 18 cm

Colours: Blue/Yellow (BGR)  
Sand/Orange (ZOB)



### 52VG Flying Disc • Palm Springs •

- diameter 27 cm
- weight approx. 170 grams

Colours: Fuchsia/Black (FWG),  
Yellow/Light blue (GLB)



### 88GA Beach Bocce Game • Hailama •

- 8 solid plastic balls, diameter 95 mm
- 2 plastic jacks, diameter 37 mm
- weight each ball approx. 250 grams

Colours: Multi (MLT)  
Sizes: 9,5 cm



### 88GB Peteca • Keala •

- lightweight Peteca shuttle
- made with durable feathers
- foam base with colourful neoprene cover
- plastic neck



### 88GC Skimball set of 3 • Mahena •

- colourful skimball set of 3
- neoprene cover with gel-filled core
- diameter approx. 6.5 cm
- quick-drying and easy to take along

# Beach Fun



***SCHREUDERS SPORT INTERNATIONAL. A DUTCH. FAMILY-RUN HOUSE OF BRANDS.***

We design, develop and market winning, contemporary sports, outdoor and leisure goods.

We have proudly served our customers for over a century, promptly responding to market demand from in-house stock. Our extensive expertise in product development combined with a socially and environmentally responsible business ethic, helps us to realise continued, sustainable growth for our own organisation and for our customers.

*Your goal ► Our game*



[sales@schreuderssport.com](mailto:sales@schreuderssport.com)

[www.schreuderssport.com](http://www.schreuderssport.com)

Copyright 2025/2026

Schreuders Sport International B.V.